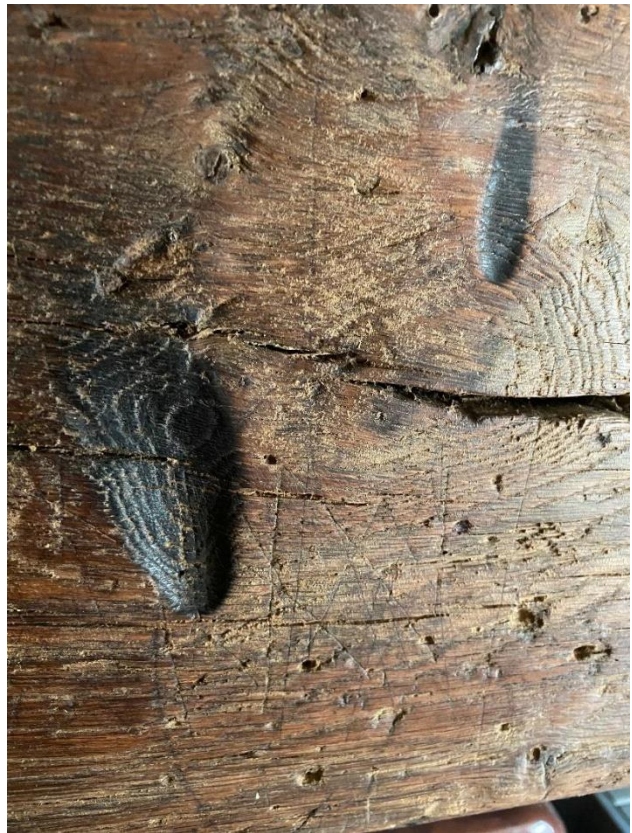
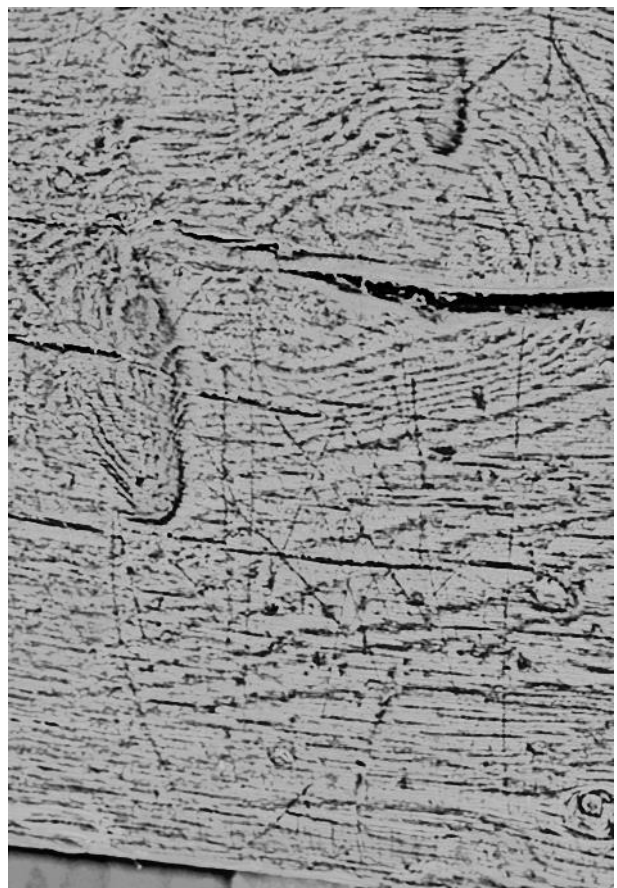


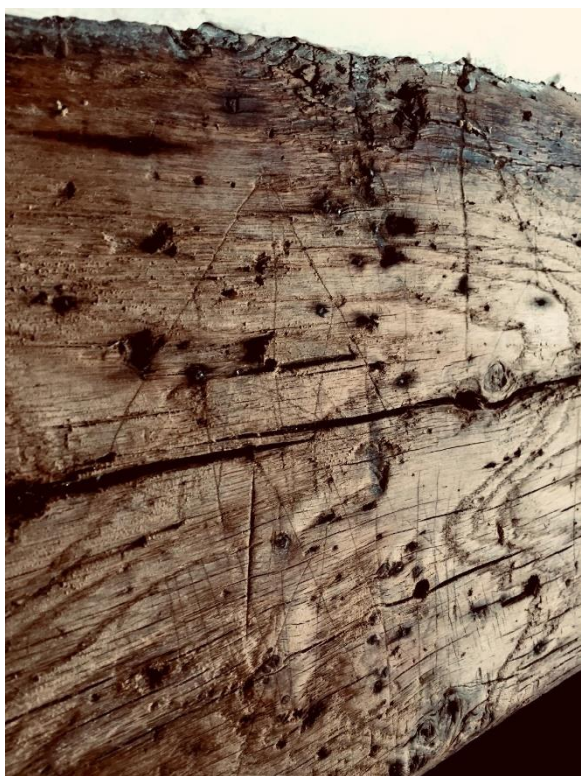
19.11.21

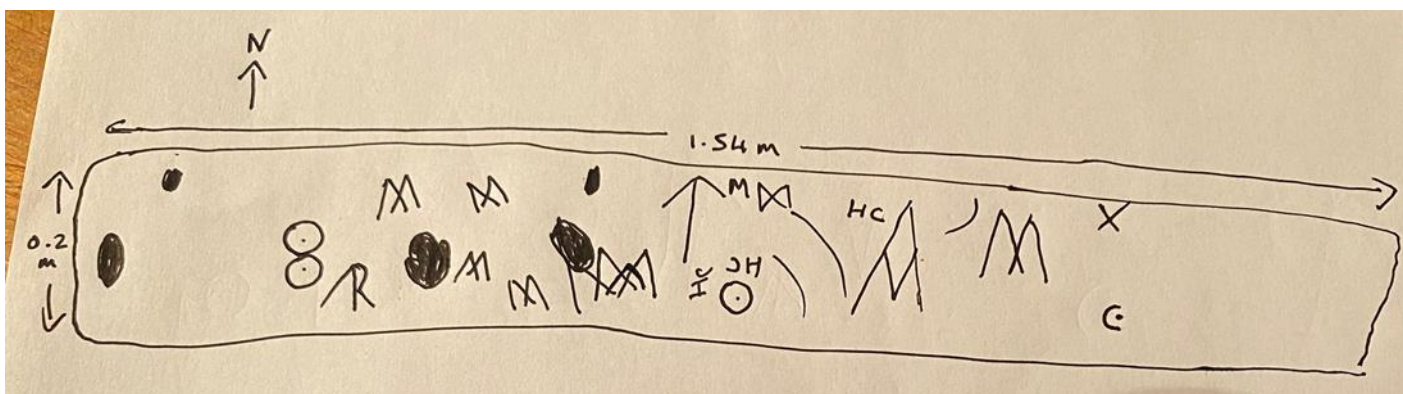
53 and 54 Low Street (both are part of one house dating c1500-1530. Transitional hall house built around the chimney).

54, Living room. Bressummer, south facing. Sand blasted but heavily covered in markings.









Daisy wheel struck through with 3 lines

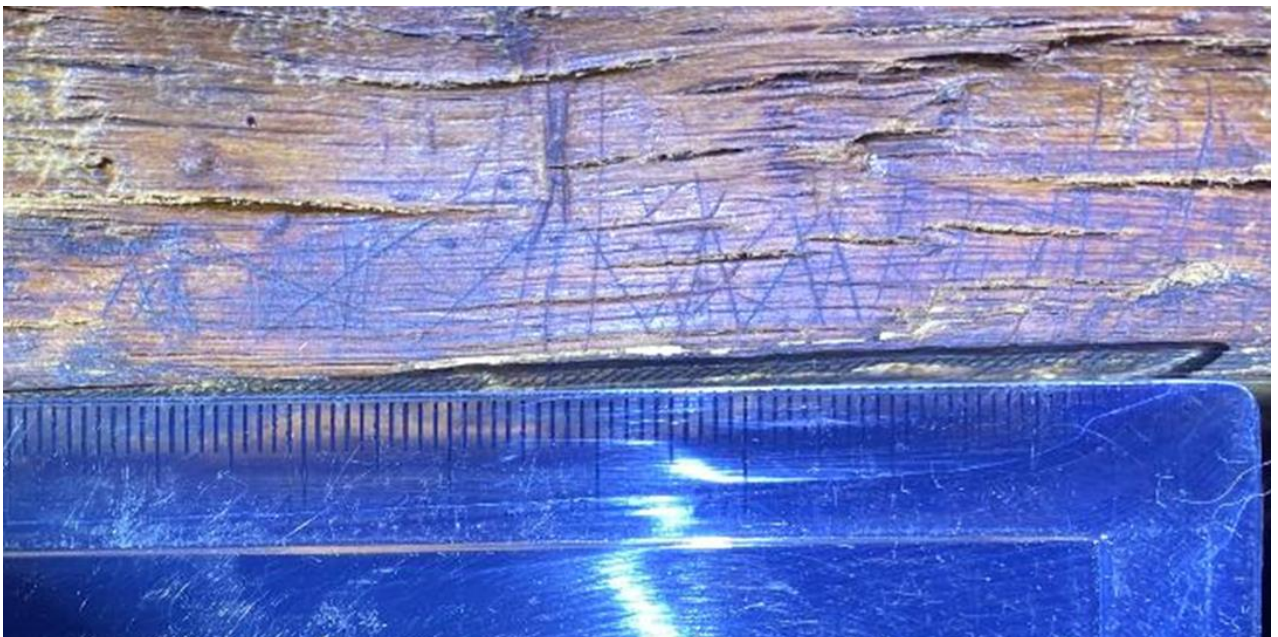
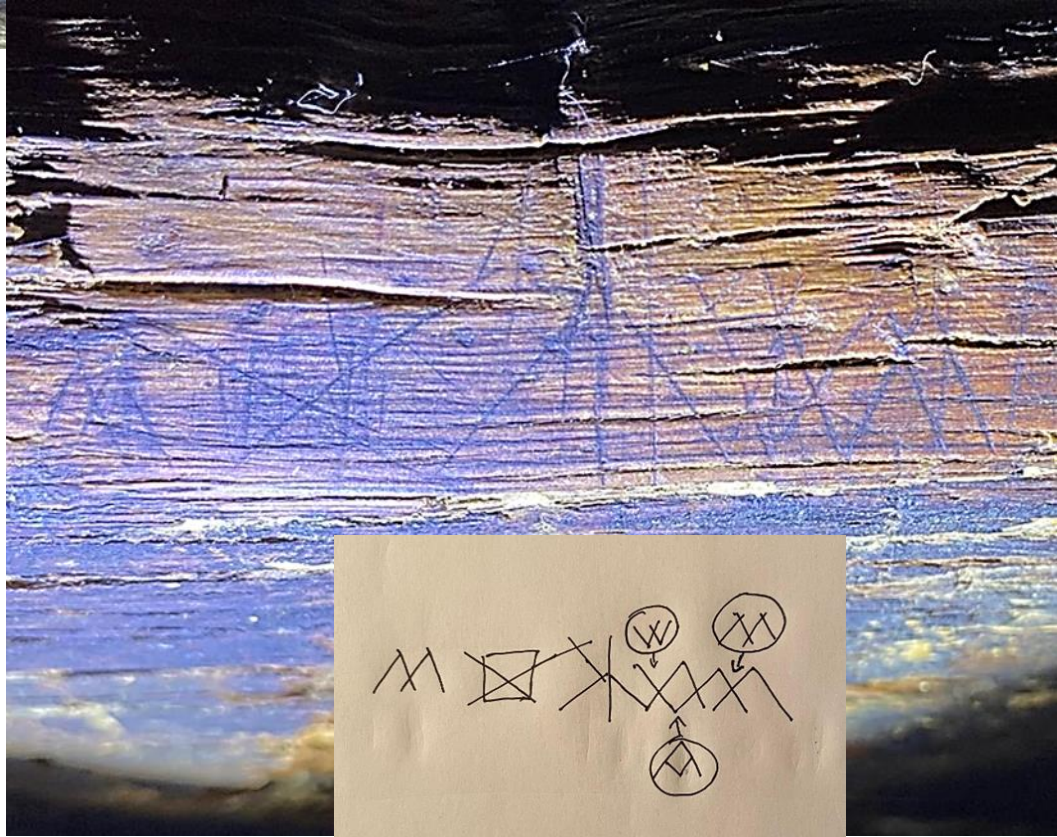
Symbol	Number
M	7
AM	2
Daisy Wheel	0
Consecration cross	0
Compass drawn circle	4
Butterfly	1
Arrow	1
Mesh	0
Cross	0
Burn	5
Chi rho	0
Stamp	3 HC, one sideways one back to front
Comment	Daisy wheel with three strikes through it on door frame to the left

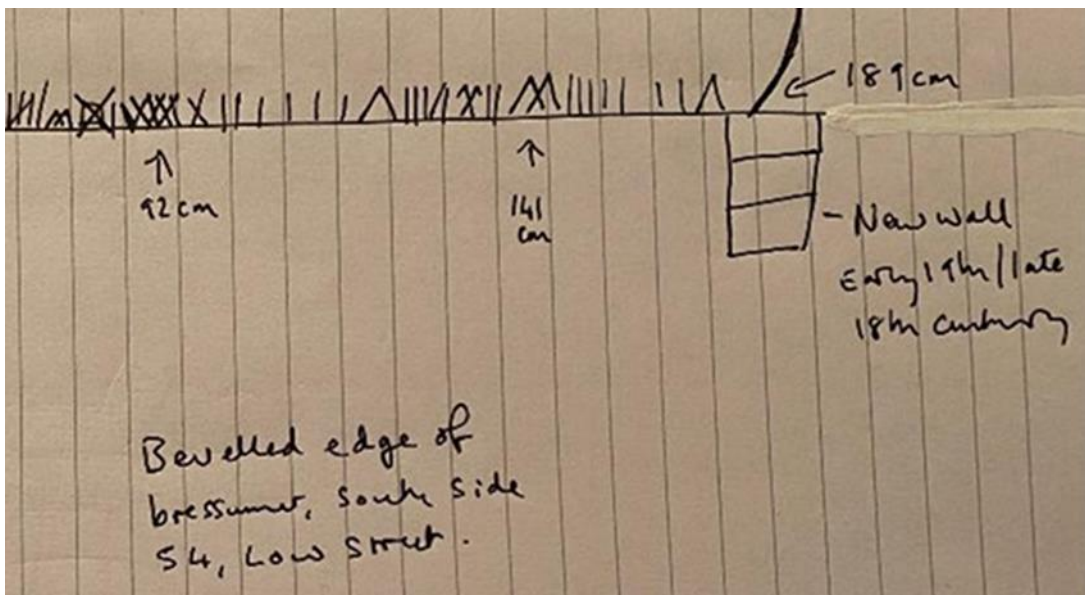
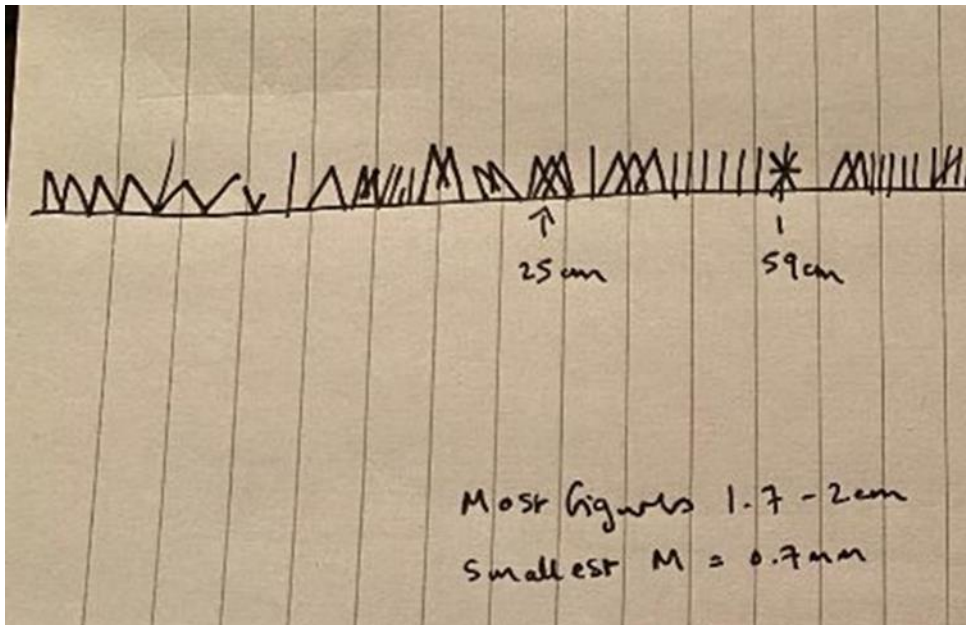


Chamfered edge of bressummer



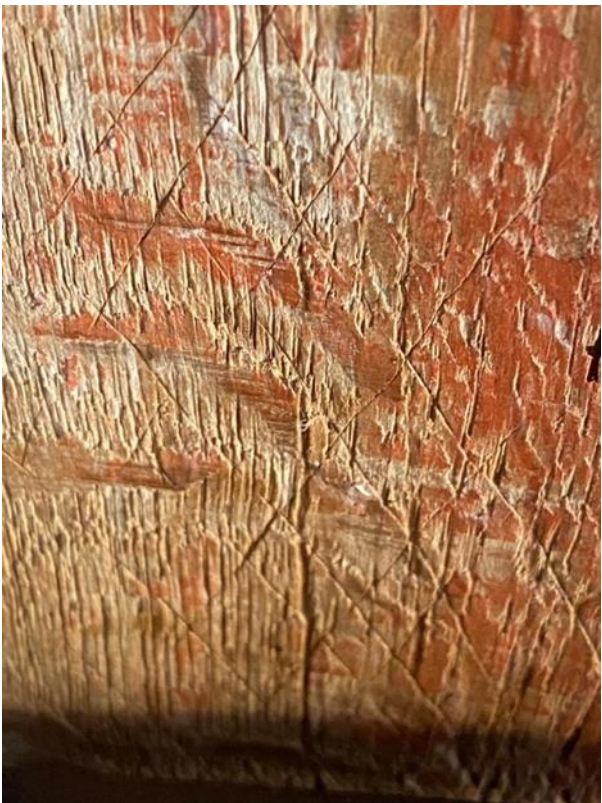
Supplimentary investigation – on checking photos with high magnification I noticed small symbols inscribed on the chamfered part of the bressummer not bigger than 1 cm tall. AM and M marks present, zig-zag (lightening) and cross-star and saltire cross amongst others. They appear to be contemporary with the insertion of the bressummer 1500-1530.





54. First floor, central room.

Two butterfly marks on ceiling beams (east and west above windows), one compass drawn circle on south ceiling beam, mesh design below light switch on south wall. Many burn marks on South, East and west wall.



Symbol	Number
M	
AM	
Daisy Wheel	
Consecration cross	
Compass drawn circle	1
Butterfly	2
Arrow	
Mesh	1
Cross	
Burn	19
X	
Chi rho	
Stamp	
Comment	



1st floor bedroom south of chimney stack = 9 burn marks., mainly around fire place.



1st floor south end of house (including bathroom) – 2 burn marks, one compressed butterfly by the window.